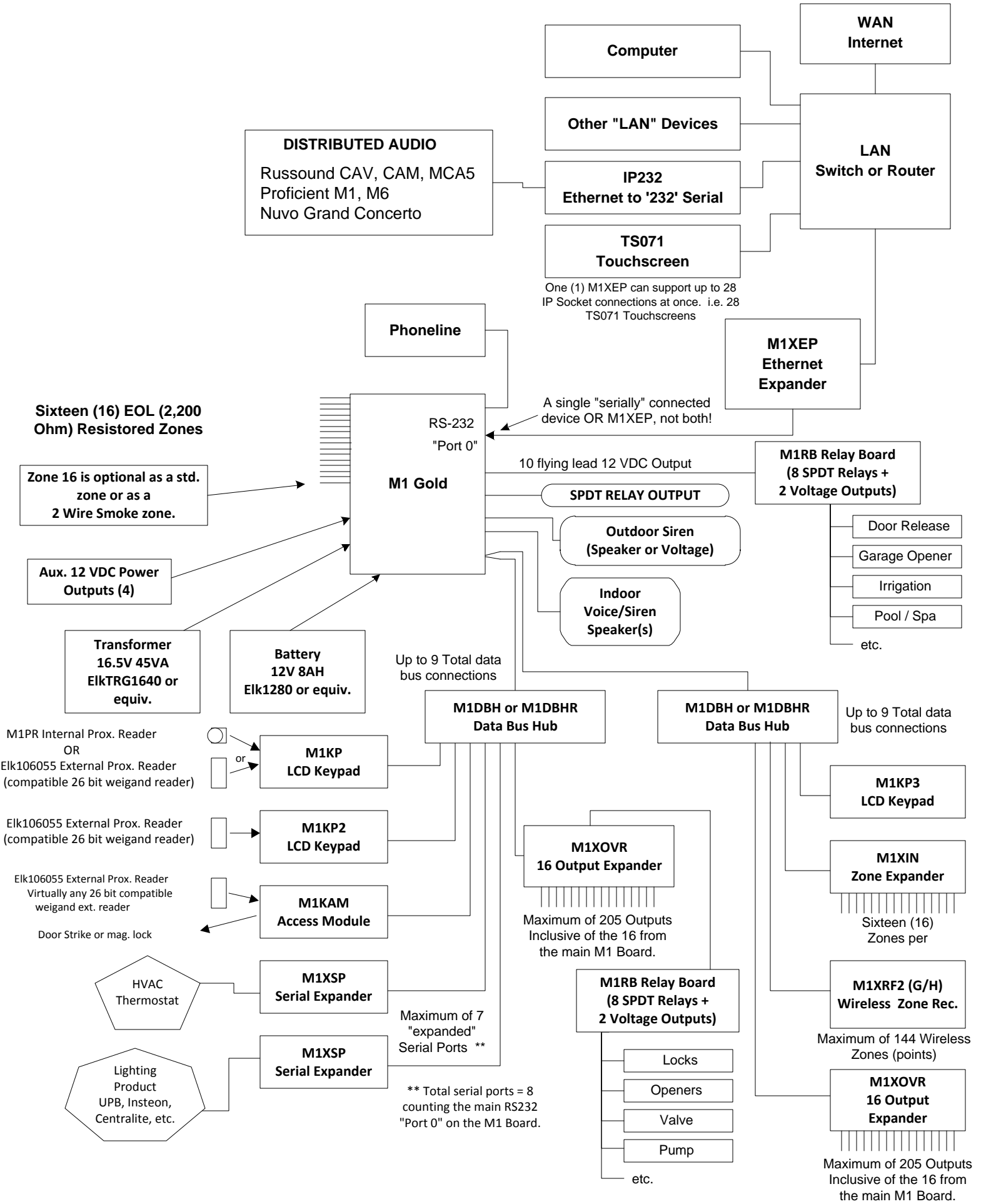


# ELK M1 SYSTEMS DESIGN GUIDE



**DISTRIBUTED AUDIO**

Russound CAV, CAM, MCA5  
Proficient M1, M6  
Nuvo Grand Concerto

Phoneline

M1 Gold

RS-232  
"Port 0"

Computer

Other "LAN" Devices

IP232  
Ethernet to '232' Serial

TS071  
Touchscreen

One (1) M1XEP can support up to 28  
IP Socket connections at once. i.e. 28  
TS071 Touchscreens

M1XEP  
Ethernet  
Expander

WAN  
Internet

LAN  
Switch or Router

Sixteen (16) EOL (2,200  
Ohm) Resistored Zones

Zone 16 is optional as a std.  
zone or as a  
2 Wire Smoke zone.

Aux. 12 VDC Power  
Outputs (4)

Transformer  
16.5V 45VA  
ElkTRG1640 or  
equiv.

Battery  
12V 8AH  
Elk1280 or equiv.

M1PR Internal Prox. Reader  
OR  
Elk106055 External Prox. Reader  
(compatible 26 bit weigand reader)

Elk106055 External Prox. Reader  
(compatible 26 bit weigand reader)

Elk106055 External Prox. Reader  
Virtually any 26 bit compatible  
weigand ext. reader

Door Strike or mag. lock

HVAC  
Thermostat

Lighting  
Product  
UPB, Insteon,  
Centralite, etc.

A single "serially" connected  
device OR M1XEP, not both!

10 flying lead 12 VDC Output

SPDT RELAY OUTPUT

Outdoor Siren  
(Speaker or Voltage)

Indoor  
Voice/Siren  
Speaker(s)

M1RB Relay Board  
(8 SPDT Relays +  
2 Voltage Outputs)

Door Release

Garage Opener

Irrigation

Pool / Spa

etc.

Up to 9 Total data  
bus connections

M1DBH or M1DBHR  
Data Bus Hub

M1DBH or M1DBHR  
Data Bus Hub

Up to 9 Total data  
bus connections

M1KP  
LCD Keypad

M1KP2  
LCD Keypad

M1KAM  
Access Module

M1XSP  
Serial Expander

M1XSP  
Serial Expander

Maximum of 7  
"expanded"  
Serial Ports \*\*

\*\* Total serial ports = 8  
counting the main RS232  
"Port 0" on the M1 Board.

M1XOVR  
16 Output Expander

Maximum of 205 Outputs  
Inclusive of the 16 from  
the main M1 Board.

M1RB Relay Board  
(8 SPDT Relays +  
2 Voltage Outputs)

Locks

Openers

Valve

Pump

etc.

M1KP3  
LCD Keypad

M1XIN  
Zone Expander

Sixteen (16)  
Zones per

M1XRF2 (G/H)  
Wireless Zone Rec.

Maximum of 144 Wireless  
Zones (points)

M1XOVR  
16 Output  
Expander

Maximum of 205 Outputs  
Inclusive of the 16 from  
the main M1 Board.